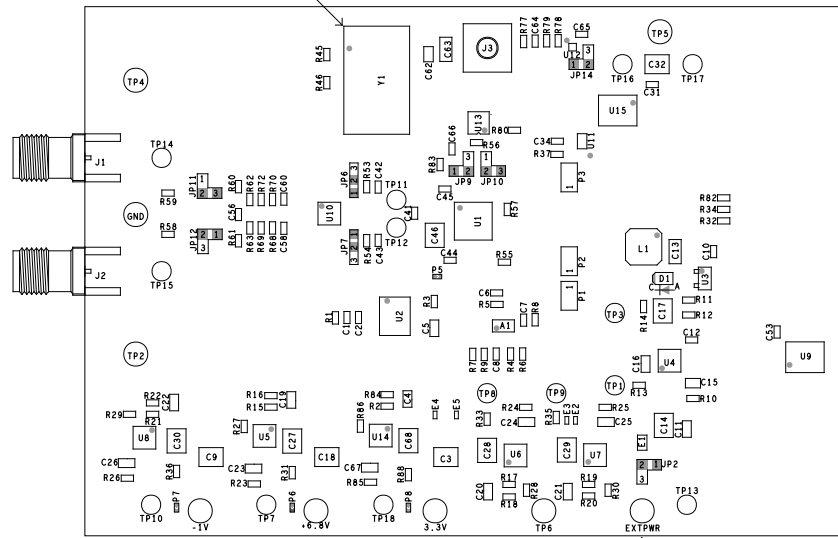


ASSEMBLY NOTES:

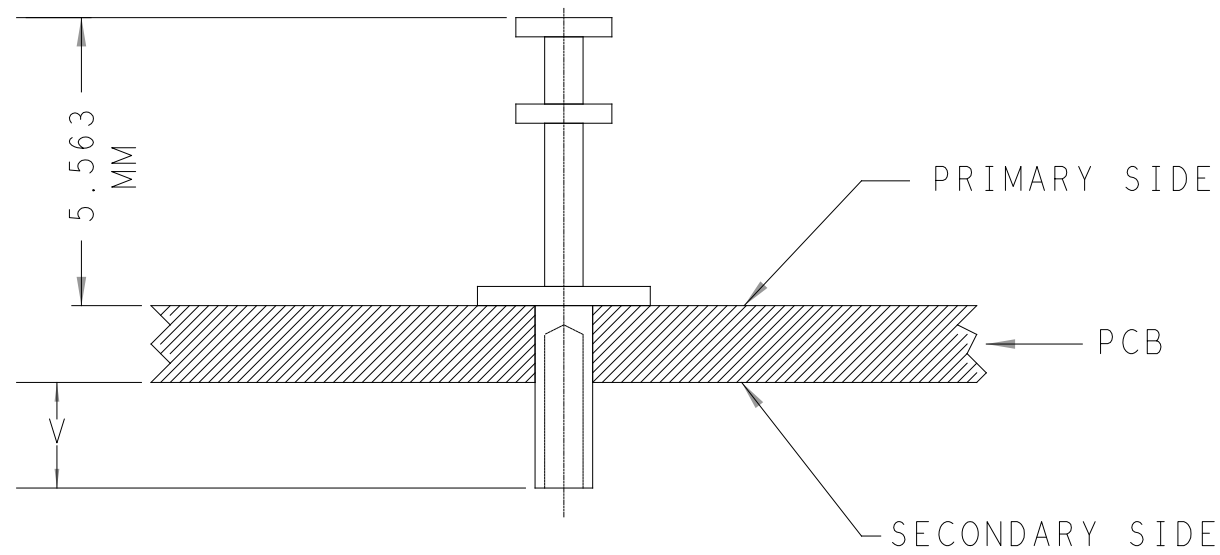
- BOARD ACCEPTABILITY PER ANALOG DEVICES, INC. SPECIFICATION TST00119 (LATEST REVISION).
- REPAIRS PER IPC-7711/21(LATEST REVISION) ARE ALLOWED.
- REPAIRS ARE NOT ALLOWED IN SOLDERMASK FREE AREAS ON EITHER SIDE OF THE BOARD.
- RoHS COMPLIANCE: ASSEMBLY VENDOR SHOULD ASSURE COMPLIANCE WITH LEAD-FREE AND RoHS PCB ASSEMBLY STANDARDS (EU RoHS DIRECTIVE 2002/95/EC).
- SHORT JUMPER PINS 1 & 2 BY ADDING SOLDER BLOB WITH THE FOLLOWING REF DES: JP2, JP9, JP12, JP14
JP6, JP7
- SHORT JUMPER PINS 2 & 3 BY ADDING SOLDER BLOB WITH THE FOLLOWING REF DES: JP10, JP11
- P5, P6, P7, P8 SHOULD BE SHORTED BY DEFAULT BY ADDING SOLDER BLOB.
- INSTALL JUMPER SHUNT (M50-2020005) ON PIN 1 & 2 FOR THE FOLLOWING:
P1 , P3
INSTALL JUMPER SHUNT (M50-2020005) ON PIN 2 & 3 FOR THE FOLLOWING:
P2
- BOARDS TO BE SHIPPED SINGULATED AFTER ASSEMBLY PROCESS.
- SMOOTHEN EDGES AND FREE FROM BURRS AFTER DEPANELIZATION PROCESS.

SEE DETAIL B



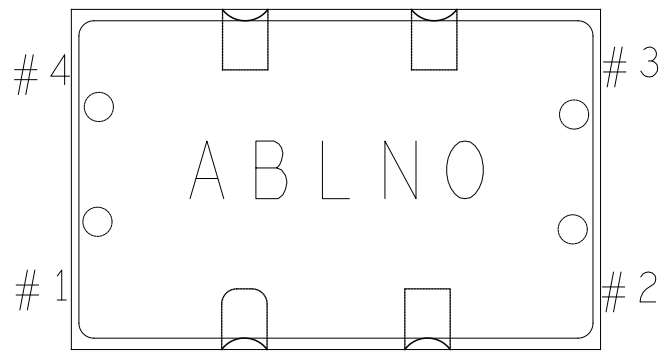
SEE DETAIL A (AT 5 PLACES)

REVISIONS			
REV	DESCRIPTION	DATE	APPROVED
A	INITIAL RELEASE	07OCT21	H. DE CHAVEZ
B	CHANGES AS PER ECR-108492	05AUG22	R. EUSTACIO
B1	CHANGES AS PER ECR-111981	05DEC22	R. EUSTACIO



DETAIL A
NO TO SCALE


Note: Actual device pin #1 has a chamfered corner terminal as shown.

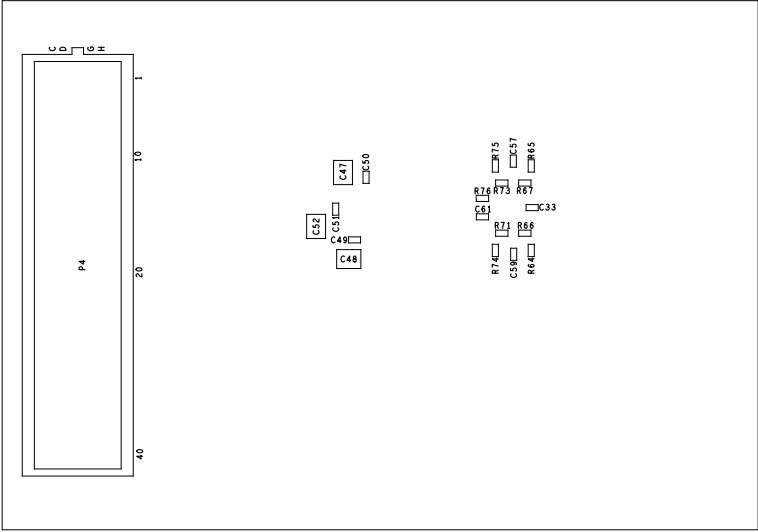
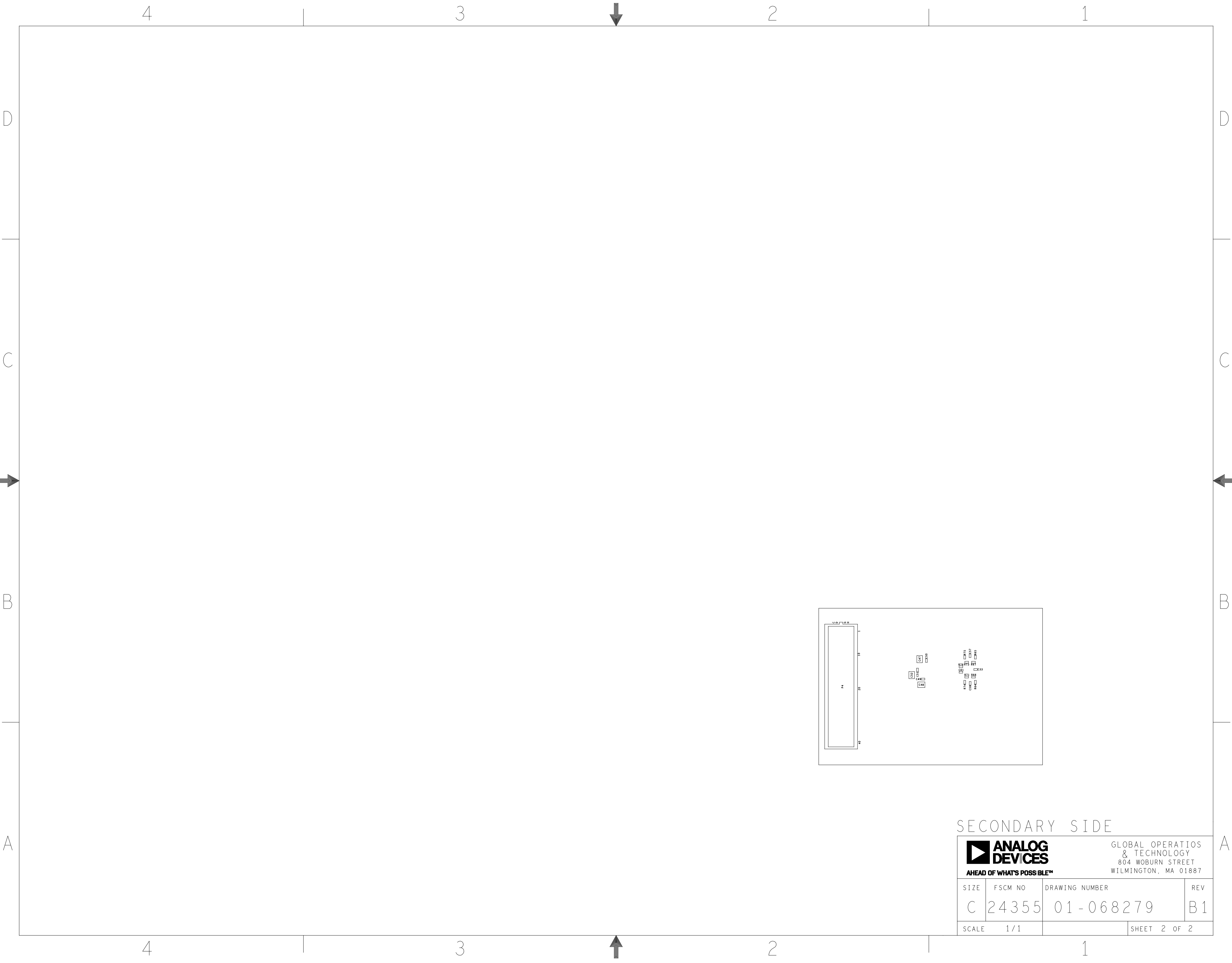


ABLNO-ASSY_DETAIL

DETAIL B

PRIMARY SIDE

UNLESS OTHERWISE SPECIFIED DIMENSIONS ARE IN MM TOLERANCES DECIMALS FRACTIONS ANGLES .XX -.010 --1/32 -- 2 .XXX -.005 .XXXX -.0050	APPROVAL	DATE	<div><div>ANALOG DEVICES</div><div>AHEAD OF WHAT'S POSSIBLE™</div></div> <div>GLOBAL OPERATIONS & TECHNOLOGY 804 WOBURN STREET WILMINGTON, MA 01887</div>			
	TEMPLATE ENGINEER					
	HARDWARE SERVICES M. VALE	07OCT21	TITLE ASSEMBLY LTC2387 CUSTOMER EVALUATION Z			
	HARDWARE SYSTEMS					
MATERIAL	TEST ENGINEER					
FINISH	COMPONENT ENGINEER A. GIRON	05AUG22	SIZE FSCM NO DRAWING NUMBER REV C 24355 01-068279 B1			
	TEST PROCESS					
	HARDWARE RELEASE K. JABATAN	07OCT21				
	PCB DESIGNER E. DELOS REYES	07OCT21				
DO NOT SCALE DWG	PTD ENGINEER H. DE CHAVEZ	07OCT21	SCALE 1 / 1 SHEET 1 OF 2			
	CHECKER					



SECONDARY SIDE

 ANALOG DEVICES AHEAD OF WHAT'S POSSIBLE™		GLOBAL OPERATIONS & TECHNOLOGY 804 WOBURN STREET WILMINGTON, MA 01887	
SIZE	FSCM NO	DRAWING NUMBER	REV
C	24355	01-068279	B1
SCALE	1 / 1	SHEET 2 OF 2	

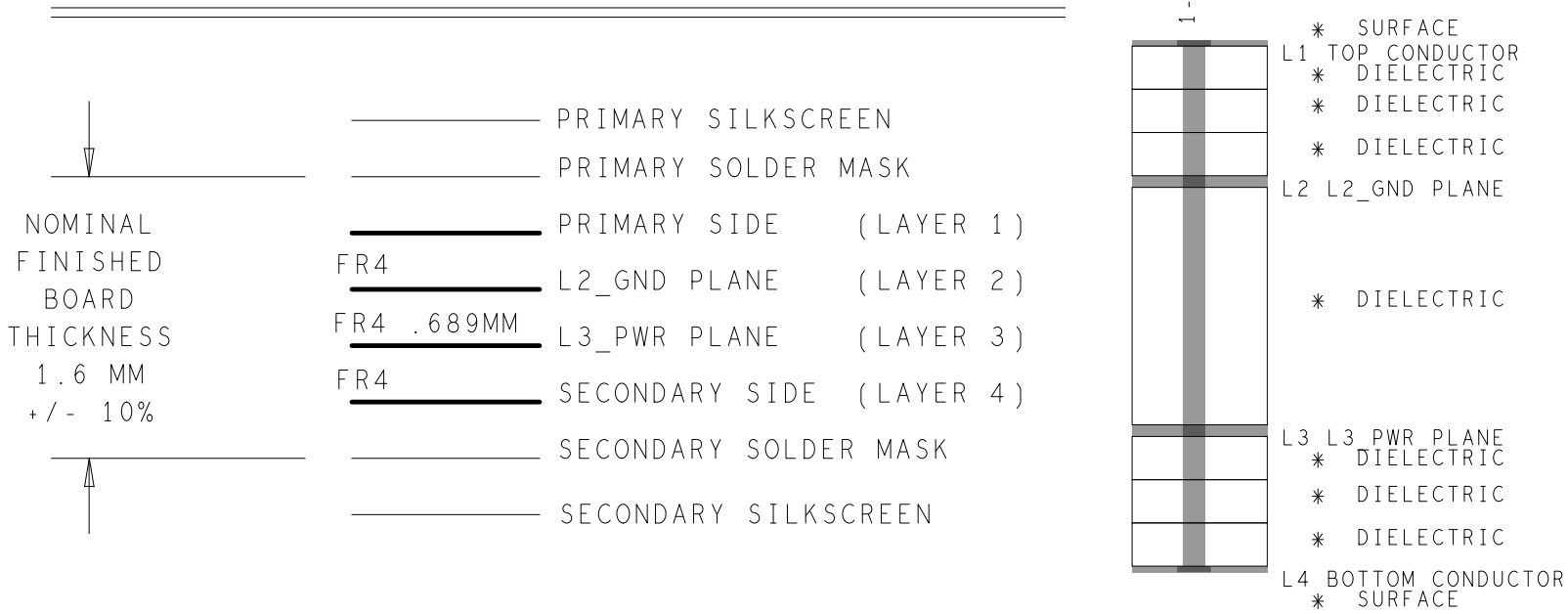
SPECIFICATIONS:

- ROHS COMPLIANCE NOTE: HOMOGENOUS MATERIALS IN THIS BOARD SHALL BE COMPLIANT THE EU RoHS DIRECTIVE 2002/95/EC
- MATERIALS; ALL LAMINATES AND BONDING MATERIALS SHOULD BE SELECTED FROM IPC-4101 OR IPC-4103, MINIMUM Tg>170degC, Td>300degC, U.L. RATING OF 94 V-0
- MATERIAL FAMILY; ISOLA370HR OR S1000-2 OR IT180 OR EQUIVALENT.
- CLADDING; EXTERNAL LAYERS .5 OZ. COPPER, OVERPLATE TO 1.5 OZ. INTERNAL PLANE LAYERS 1 OZ. COPPER.
- NOTE: IF THE LAYER STACKUP CONFLICTS WITH THE ABOVE CLADDING SPECIFICATIONS THEN THE LAYER STACKUP SHALL TAKE PRECEDENCE.
- SOLDER MASK; SHALL BE LIQUID PHOTOIMAGEABLE (LPI) APPLIED ON BOTH SIDES OVER BARE COPPER OR GOLD AND SHALL MEET IPC-SM-840 (LATEST REV.) CLASS 3. COLOR GREEN.
- SILK SCREEN; SHALL BE PERMANENT NON-CONDUCTIVE EPOXY INK, COLOR: WHITE SYNTHETIC INKJET PRINTING ALLOWED FOR DENSE BOARDS, COLOR: WHITE
- SURFACE FINISH; ENIG (ELECTROLESS NICKEL/IMMERSION GOLD) PER IPC-4552 LATEST REVISION
- INTENTIONAL SHORTS; IF SUPPLIED DATA INCLUDES A FILE "READ_ME.2", THEN INTENTIONAL NET SHORTS EXIST. CUSTOMER REVIEW AND APPROVAL IS REQUIRED IF SUPPLIED DATA REPORTS ANY CONDITION THAT DOES NOT MATCH "READ_ME.2" FILE PROVIDED.
- TEST REQUIREMENTS; 100% NETLIST ELECTRICAL VERIFICATION USING CUSTOMER SUPPLIED IPC-D-356 NETLIST FOR OPENS AND SHORTS WHEN "GERBER DATA" IS PROVIDED. THIS VERIFICATION ALSO REQUIRED FOR "ODB++" DATA PER EMBEDDED NETLIST.

REQUIREMENTS:

- REFER TO IPC-6010 SERIES (LATEST REV.), CLASS 2 FOR FABRICATION UNLESS OTHERWISE SPECIFIED.
- ACCEPTABILITY PER ANALOG DEVICES, INC. SPECIFICATION TST00115, (LATEST REVISION.)
- MODIFICATIONS TO THE ARTWORK ARE NOT ALLOWED WITHOUT WRITTEN AUTHORIZATION.
- HOLE PATTERN TOLERANCES FOR UNDIMENSIONED HOLES SHALL BE A DIAMETER OF 0.127 MM FROM THEIR TRUE POSITION.
- PLATED HOLE WALL THICKNESS SHALL NOT BE LESS THAN 0.0254 MM MINIMUM AVERAGE, WITH NO READING LESS THAN .0203 BY CROSS SECTION.
- HOLE DIAMETERS APPLY AFTER PLATING.
- FINISHED CONDUCTOR WIDTHS SHALL NOT BE REDUCED FROM THE NOMINAL INDICATED ON THE MASTER PATTERN, BY MORE THAN THE CONDUCTOR THICKNESS.
- MINIMUM DESIGN LINE WIDTH IS .200 MM.
- MINIMUM DESIGN SPACING IS .127 MM.
- ~~NON-FUNCTIONAL PAD REMOVAL FROM INNER SIGNAL LAYERS MAY BE PERFORMED AFTER CUSTOMER APPROVAL.~~
- IF PAD SIZES PROVIDED ARE NOT LARGE ENOUGH TO MAINTAIN ANNULAR RING REQUIREMENT, MFR. MAY REQUEST APPROVAL TO TEAR DROP PADS TO MAINTAIN ANNULAR RING. (AT PAD TO TRACE INTERSECTION ONLY AND ELECTRICAL INTEGRITY MUST BE MAINTAINED.)
- THIEVING MAY BE ADDED TO COMPENSATE FOR LOW COPPER DENSITY AREAS ON THIS DESIGN ONLY AFTER REVIEW AND APPROVAL FROM THE CUSTOMER:
 - THIEVING TO CARD EDGE, FIDUCIALS, NON-PLATED THROUGH HOLES, ALL OTHER FEATURES TO BE 0.200 INCH MINIMUM.
 - THERE SHALL BE NO THIEVING IN ANY AREAS FREE OF SOLDER MASK OR INTERNAL COPPER PLANES.
- MFR. TO LEGIBLY ETCH OR STAMP/SCREEN WITH PERMANENT NON-CONDUCTIVE INK ON SECONDARY SIDE IN A CLEAR AREA UNLESS OTHERWISE INDICATED;
 - U.L. CODE-FLAMMABILITY RATING
 - DATE CODE (STAMP).
 - LOT NUMBER
 - MFR LOGO
 - SUCCESSFUL ELECTRICAL TEST.
- REPAIRS PER IPC-7711/21 (LATEST REV.) ARE ALLOWED.
- VIAS TO BE FILL WITH NON-CONDUCTIVE EPOXY AND PLATED OVER.
- BOARDS TO BE SHIPPED IN ARRAYS AND KEEP INTACT. PANEL TO BE SUBJECTED TO CUSTOMER'S APPROVAL. PANELED SOLDER PASTE STENCIL SHOULD BE SENT TO THE CUSTOMER.

4 LAYER STACKUP




IMPEDANCE TABLE

NOTE: ALL IMPEDANCE TOLERANCE +/-10%

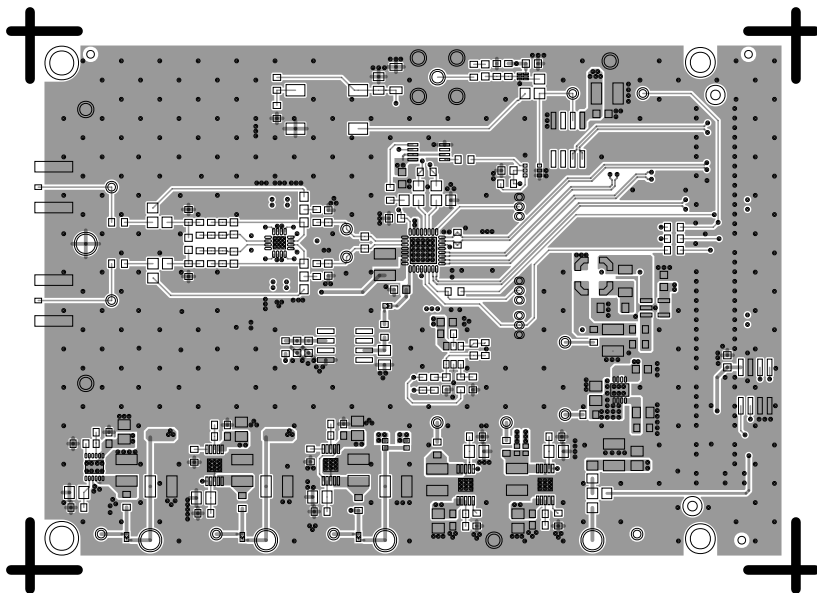
DP = DIFFERENTIAL PAIR

LAYER	IMPEDANCE	REFERENCE	LINE WIDTH	SPACE
L1	100 OHMS DP	L2	0.254MM	0.127MM
L4	100 OHMS DP	L3	0.254MM	0.127MM

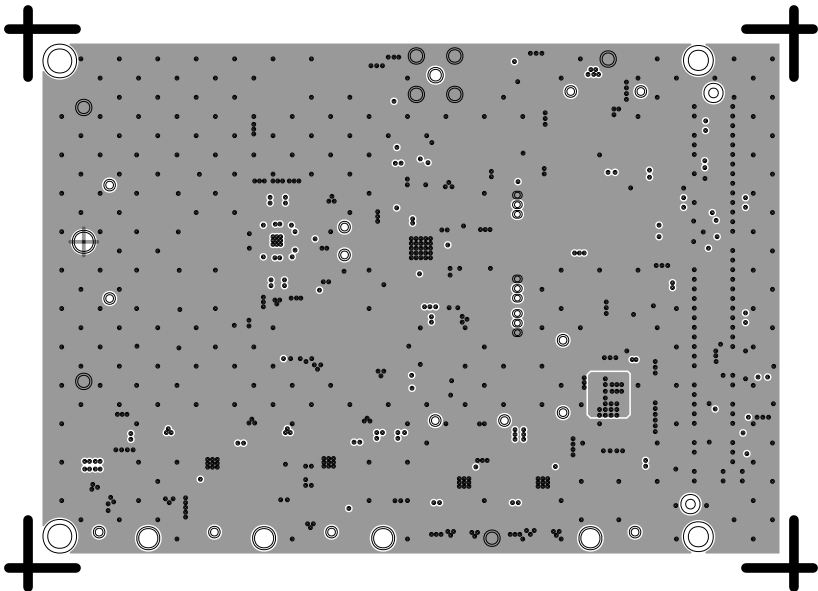
PRIMARY SIDE

 ANALOG DEVICES AHEAD OF WHAT'S POSSIBLE™		GLOBAL OPERATIONS & TECHNOLOGY 804 WOBURN STREET WILMINGTON, MA 01887		
SIZE	FSCM NO	DRAWING NUMBER	REV	
C	24355	09-068279	B	
SCALE	1 / 1	SHEET 2 OF 2		

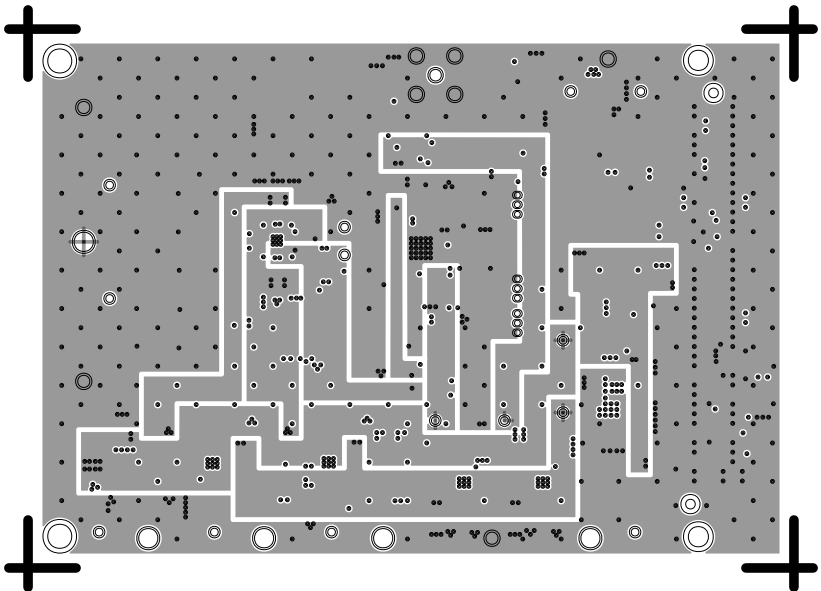
L1 PRIMARY
08-068279-01
REV B



L2 GND
08-068279-07
REV B



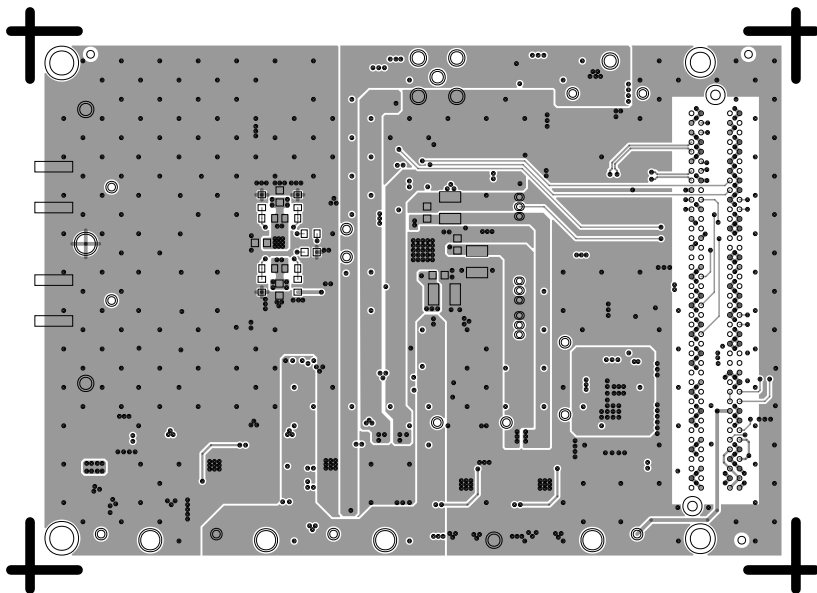
L3 PWR
08-068279-08
REV B



L2 SECONDARY

08-068279-02

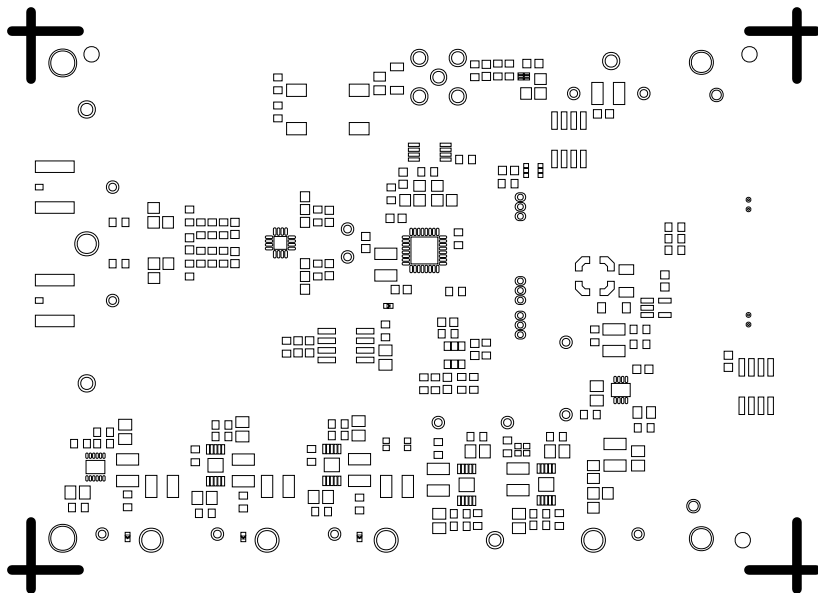
REV B



SOLDERMASK PRIMARY

08-068279-04

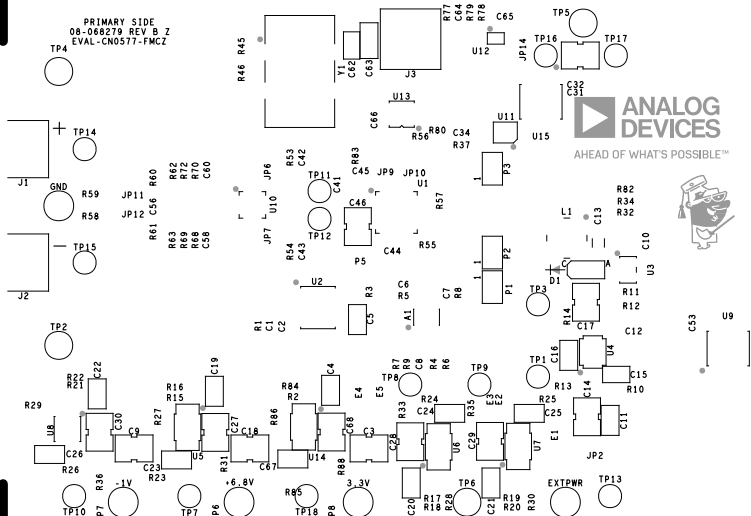
REV B



SILKSCREEN PRIMARY

08-068279-03

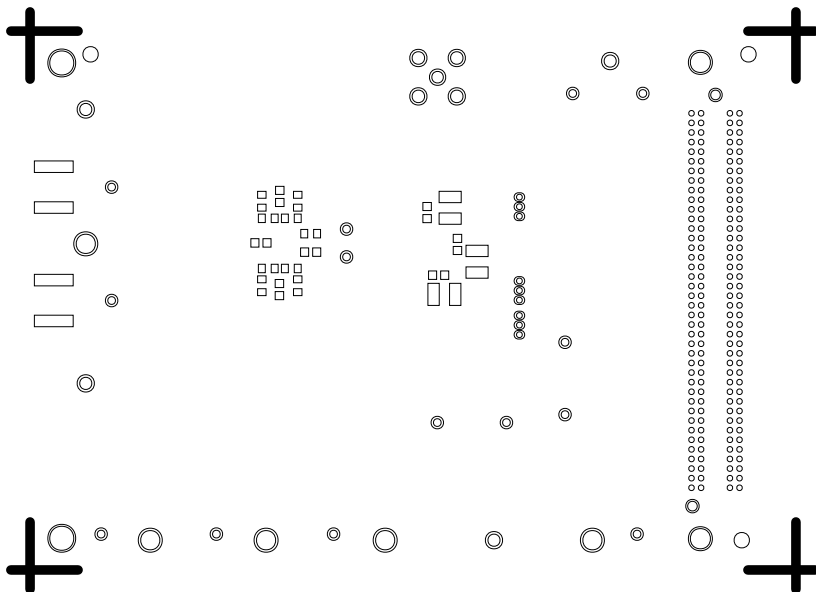
REV B



SOLDERMASK SECONDARY

08-068279-06

REV B



SILKSCREEN SECONDARY

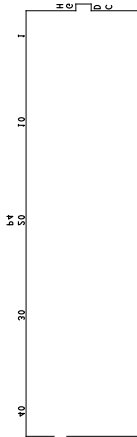
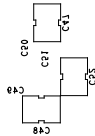
08-068279-05

REV B

08-068279 REV B 1
SECONDARY SIDE



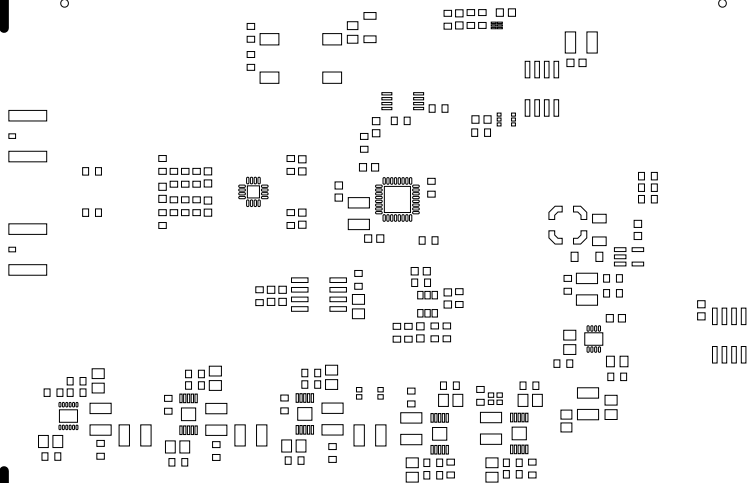
0823
R18
R17
R16
R15
R14
R13
R12
R11
R10
R09
R08
R07
R06
R05
R04
R03
R02
R01
R00



PASTEMASK PRIMARY

08-068279-09

REV B



PASTEMASK SECONDARY

08-068279-10

REV B

